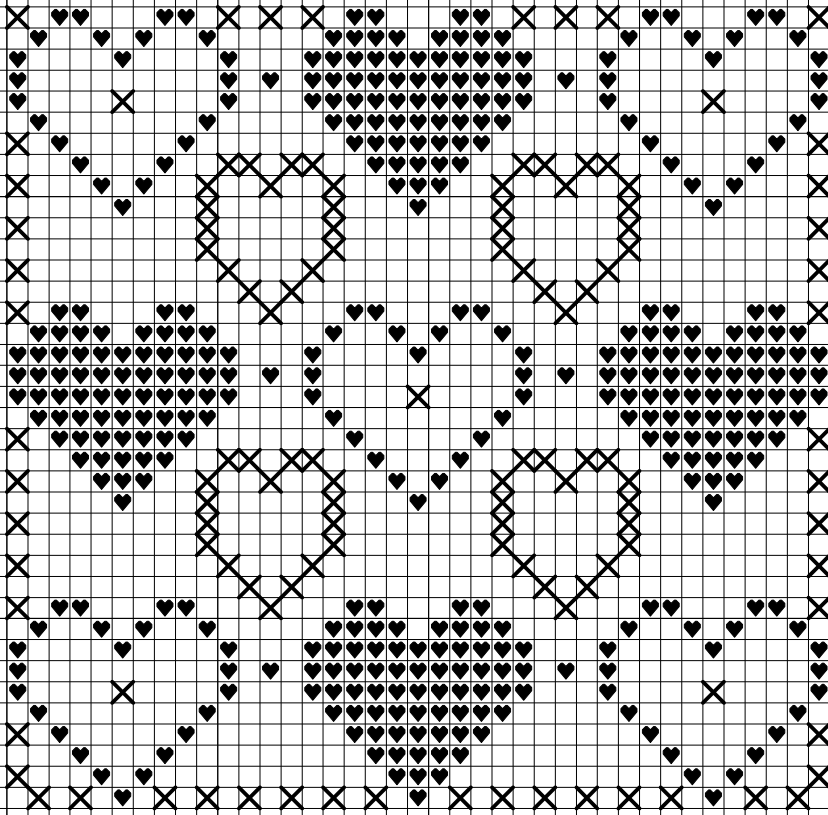


Cherry Blossom Needlecraft Black and Red Hearts Card

Copyright © 2007



Key:

♥ DMC : 321

— DMC : 310

Instructions:

Fabric required: 14 x 14cm of 14 count white Aida.

All cross stitch is worked using 2 strands of DMC 321

red. All backstitch is worked using one strand of

DMC 310 black.

Finishing Instructions:

Cut around the design 4 squares from the edge of the stitching. Fray one row of squares on each side.

Use fabric glue to stick the design onto a blank greeting card, measuring 10 x 10cm.