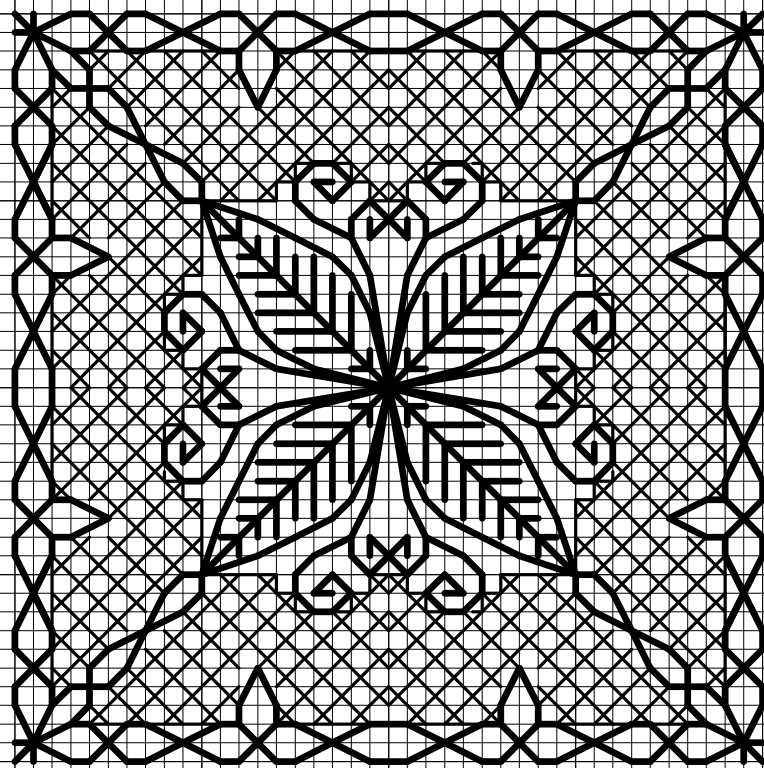


Cherry Blossom Needlecraft Blackwork Card 2

Copyright © 2007



Key:

- DMC : 498

- DMC Coton Perle No12: 310

Instructions:

Fabric required: 14 x 14cm of 14 count White Aida

All backstitch is worked with one strand of thread.

The DMC Coton Perle is non-divisible.

Finishing Instructions:

Cut around the design 4 squares from the edge of the stitching. Fray one row of squares.

Use fabric glue to stick the design onto a blank greeting card, measuring 10 x 10cm.