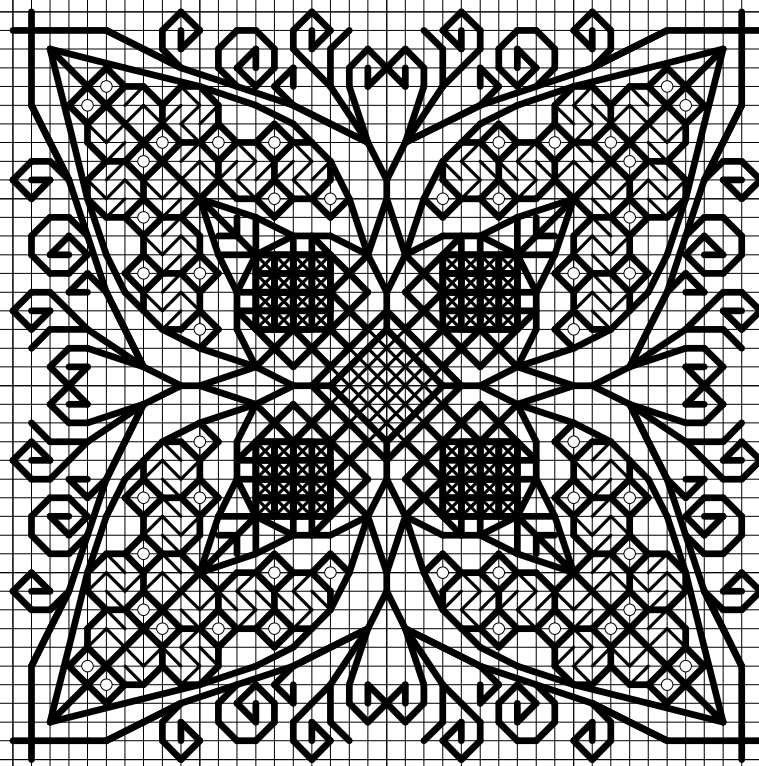


# Cherry Blossom Needlecraft

## Blackwork Card

Copyright © 2007



### Key:

- DMC : 498
- DMC Coton Perle No 12 : 310
- Mill Hill Bead: 03049

### Instructions:

Fabric required: 14 x 14cm of 14 count White Aida  
All backstitch is worked with one strand of thread.  
The DMC Coton Perle is non-divisible.

### Finishing Instructions:

Cut around the design 4 squares from the edge of the stitching. Fray one row of squares.  
Use fabric glue to stick the design onto a blank greeting card, measuring 10 x 10cm.