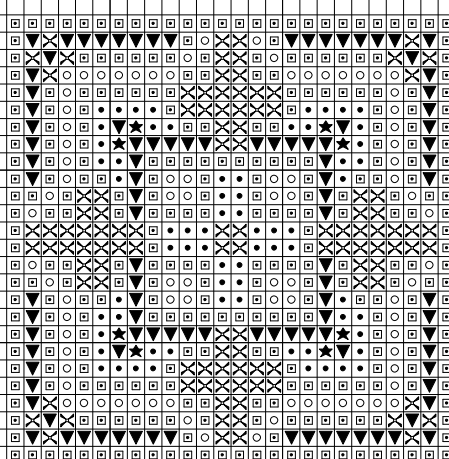
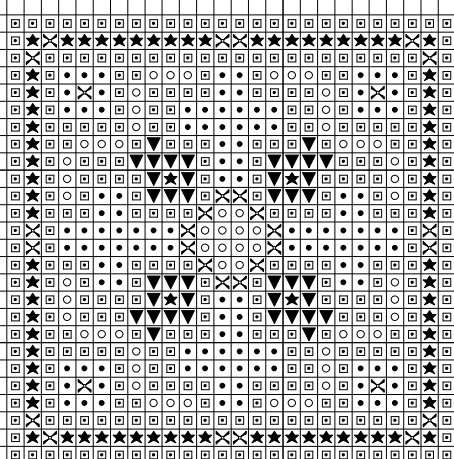


Cherry Blossom Needlecraft Stained Glass Greetings Cards

Copyright © 2006

Design 1

Design 2



Design 3

Key:

- DMC : 783
- ★ DMC : 3821
- DMC : 321
- ▼ DMC : 815
- ◻ DMC : 310
- × DMC : 341

Instructions:

Fabric required: 10 x 10 cm 18 count antique White Aida.

Follow the symbols on the key for the thread colours used for each design.

All cross stitch is worked using 2 strands of thread.

To complete each design, cut the fabric ten squares from the edge of the stitching. Fray 5 rows of squares on all sides.

Mount on a blank greeting card, measuring 10 x 10cm.